

DRE

DOOR CATALOGUE 2023

edition 1



HIGH GLOSS DOORS XTREME MATT DOORS MAT STANDARD



STANDARD OPTION

- » edge whitout rebate
- » door leaf coated with high gloss laminate, matt standard or Xtreme Matt
- » stiles and rails made of MDF
- » Magnetic lock for simple key, bathroom lock, cylinder lock or economic magnetic lock and hinges in black (for moro decors, matt moro), white (for bianco decors, matt bianco, white) and steel for other decors.
- » glass pane MAT DRE 4 mm thick in ILIS 1-3
- » core made of 20 mm MDF board in ILIS 4
- » complex safe 8 mm glass pane MAT DRE in ILIS 5
- » sockets for 2 hidden concealed Estetic 80 hinges

OPTION WITHOUT EXTRA CHARGE

- » glass pane DECORMAT BROWN, DECORMAT GRAPHITE and 4 mm transparent glass in ILIS 1 - 3
- » complex safe 8 mm glass pane transparent in ILIS 5
- » holes for ventilation sleeves
- » sliding door - 2043 mm height

OPTIONS AVAILABLE WITH EXTRA CHARGE

- » door leaf „100”
- » ventilation undercut
- » cover strip for double door leaf
- » double door leaf
- » **NOTE:** third hinge Estetic 80 for non-rebated doors
(extra payment is added to the price of the door frame)

leaf price x2

ATTENTION: The leaves are equipped with sockets for further installation of hinges, which are embedded in the frame.

Sliding system - it is possible to apply to the collection SPAZIO CD sliding system in the standard height of 2043 mm. More information on p. 10.

Gloss laminate. 0.7-0.8 mm of thickness is a modern laminate with a high degree of gloss, giving the effect of a mirror reflection. It is characterized by a perfectly smooth surface with increased scratch resistance.

Xtreme Matt laminate with a thickness of 0.8 mm is an innovative laminate with a matt, non-reflective structure. The Xtreme Matt surface is durable, scratch-resistant and easy to care for. The structure has been additionally reinforced with the Anti-Finger-Print property, which protects the surface fingerprints against and traces of grease.

Matt Standard Laminate with the 0,7-0.8 mm of thickness, the same properties as a high-gloss surface. The only difference is the degree of gloss of the hardcoat layer. Thanks to the pore-free hardcoat coating, the laminate can be used in rooms with the highest hygienic requirements.



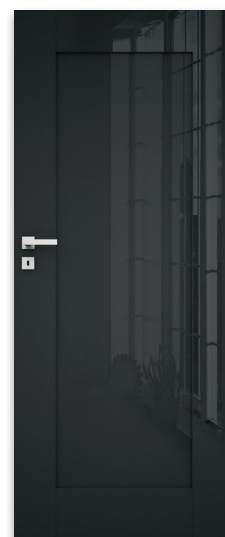
ILIS 1



ILIS 2



ILIS 3



ILIS 4

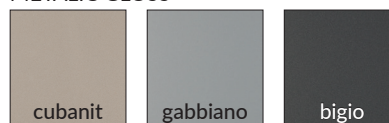


ILIS 5

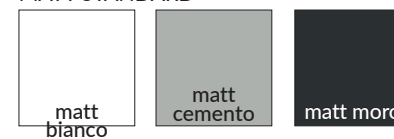
STANDARD GLOSS



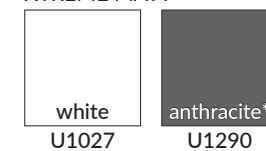
METALIC GLOSS



MATT STANDARD



XTREME MATT



*while stock lasts



STANDARD OPTION

- » edge whitout rebate
- » door leaf coated with high gloss laminate, matt standard or Xtreme Matt
- » stiles and rails made of MDF
- » Magnetic lock for simple key, bathroom lock, cylinder lock or economic magnetic lock and hinges in black (for moro decors, matt moro), white (for bianco decors, matt bianco, white) and steel for other decors.
- » glass pane MAT DRE 4 mm thick
- » sockets for 2 hidden concealed Estetic 80 hinges

OPTION WITHOUT EXTRA CHARGE

- » glass pane DECORMAT BROWN, DECORMAT GRAPHITE and transparent glass pane
- » holes for ventilation sleeves
- » sliding door - 2043 mm height

OPTIONS AVAILABLE WITH EXTRA CHARGE

- » door leaf „100”
- » ventilation undercut
- » cover strip for double door leaf
- » double door leaf
- » **NOTE:** third hinge Estetic 80 for non-rebated doors
(extra payment is added to the price of the door frame)

leaf price x2

ATTENTION: The leaves are equipped with sockets for further installation of hinges, which are embedded in the frame.

Sliding system - it is possible to apply to the collection SPAZIO CD sliding system in the standard height of 2043 mm. More information on p. 10.

Gloss laminate. 0.7-0.8 mm of thickness is a modern laminate with a high degree of gloss, giving the effect of a mirror reflection. It is characterized by a perfectly smooth surface with increased scratch resistance.

Xtreme Matt laminate with a thickness of 0.8 mm is an innovative laminate with a matt, non-reflective structure. The Xtreme Matt surface is durable, scratch-resistant and easy to care for. The structure has been additionally reinforced with the Anti-Finger-Print property, which protects the surface fingerprints against and traces of grease.

Matt Standard Laminate with the 0,7-0.8 mm of thickness, the same properties as a high-gloss surface. The only difference is the degree of gloss of the hardcoat layer. Thanks to the pore-free hardcoat coating, the laminate can be used in rooms with the highest hygienic requirements.



NELLA 1



NELLA 2



NELLA 3



NELLA 4



NELLA 5



NELLA 6

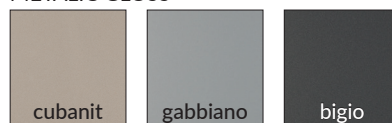


NELLA 7

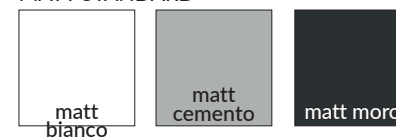
STANDARD GLOSS



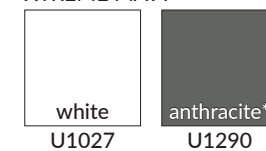
METALIC GLOSS



MATT STANDARD



XTREME MATT



*while stock lasts



STANDARD OPTION

- » edge whitout rebate
- » core made of perforated chipboard
- » door leaf coated with high gloss laminate, matt standard or Xtreme Matt
- » edge banding in door leaf colour
- » Magnetic lock for simple key, bathroom lock, cylinder lock or economic magnetic lock and hinges in black (for moro decors, matt moro), white (for bianco decors, matt bianco, white) and steel for other decors.
- » sockets for 2 hidden concealed Estetic 80 hinges

OPTION WITHOUT EXTRA CHARGE

- » holes for ventilation sleeves
- » sliding door - 2043 mm height

OPTIONS AVAILABLE WITH EXTRA CHARGE

- » edge banding pattern
- » door leaf „100”
- » ventilation undercut
- » cover strip for double door leaf
- » aluminum ventilation grille
- » double door leaf
- » **NOTE:** third hinge Estetic 80 for non-rebated doors
(extra payment is added to the price of the door frame)

leaf price x2

NOTE: Door leaves are equipped with sockets for future installation of the hinges. NON-rebated door frames are equipped with hinges. Metal BULAJ in steel or black colour - available in only matt or transparent glass.

Sliding system - it is possible to apply to the collection SPAZIO CD sliding system in the standard height of 2043 mm. More information on p. 10.

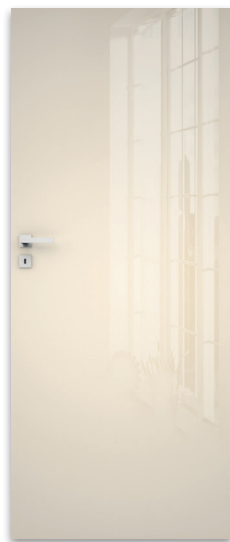
Gloss laminate. 0.7-0.8 mm of thickness is a modern laminate with a high degree of gloss, giving the effect of a mirror reflection. It is characterized by a perfectly smooth surface with increased scratch resistance.

Xtreme Matt laminate with a thickness of 0.8 mm is an innovative laminate with a matt, non-reflective structure. The Xtreme Matt surface is durable, scratch-resistant and easy to care for. The structure has been additionally reinforced with the Anti-Finger-Print property, which protects the surface fingerprints against and traces of grease.

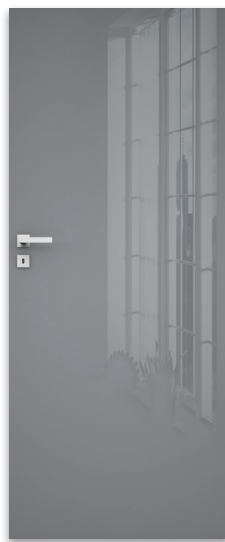
Matt Standard Laminate with the 0,7-0.8 mm of thickness, the same properties as a high-gloss surface. The only difference is the degree of gloss of the hardcoat layer. Thanks to the pore-free hardcoat coating, the laminate can be used in rooms with the highest hygienic requirements.



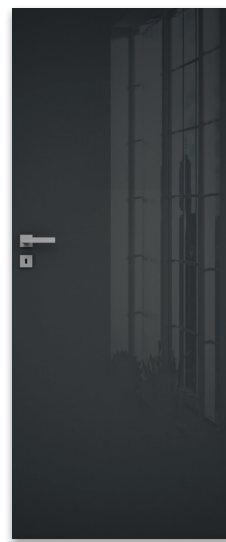
SILIA 10
bianco



SILIA 10
magnolia



SILIA 10
gabbiano



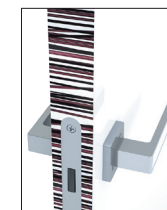
SILIA 10
bigio



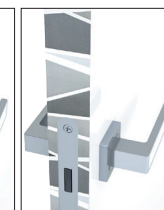
Metal Bulaj
vino

There is possibility to choose an edge banding pattern.
Available only in decor bianco.

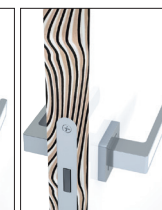
EDGE BANDING PATTERNS



theme 1



theme 2

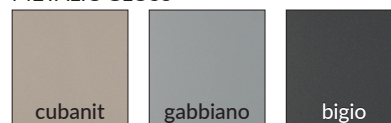


theme 3

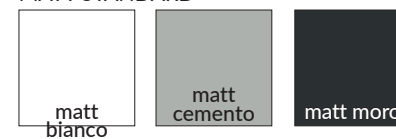
STANDARD GLOSS



METALIC GLOSS



MATT STANDARD



XTREME MATT



*while stock lasts



STANDARD OPTION

- » edge whitout rebate
- » door leaf coated with high gloss laminate, matt standard or Xtreme Matt
- » door leaf frame made of MDF, narrow element with constant width, wide element with variable width
- » core made of perforated chipboard
- » Magnetic lock for simple key, bathroom lock, cylinder lock or economic magnetic lock and hinges in black (for moro decors, matt moro), white (for bianco decors, matt bianco, white) and steel for other decors.
- » complex safe MATT DRE 8 mm glass
- » sockets for 2 hidden concealed Estetic 80 hinges

OPTION WITHOUT EXTRA CHARGE

- » complex safe transparent 8 mm glass pane
- » sliding door - 2043 mm height
- » 8 mm black laminated glass pane

OPTIONS AVAILABLE WITH EXTRA CHARGE

- » door leaf „100”
- » ventilation undercut
- » cover strip for double door leaf
- » double door leaf
- » **NOTE:** third hinge Estetic 80 for non-rebated doors
(extra payment is added to the price of the door frame)

leaf price x2

ATTENTION: The leaves are equipped with sockets for further installation of hinges, which are embedded in the frame.

Sliding system - it is possible to apply to the collection SPAZIO CD sliding system in the standard height of 2043 mm. More information on p. 10.

Gloss laminate. 0.7-0.8 mm of thickness is a modern laminate with a high degree of gloss, giving the effect of a mirror reflection. It is characterized by a perfectly smooth surface with increased scratch resistance.

Xtreme Matt laminate with a thickness of 0.8 mm is an innovative laminate with a matt, non-reflective structure. The Xtreme Matt surface is durable, scratch-resistant and easy to care for. The structure has been additionally reinforced with the Anti-Finger-Print property, which protects the surface fingerprints against and traces of grease.

Matt Standard Laminate with the 0,7-0.8 mm of thickness, the same properties as a high-gloss surface. The only difference is the degree of gloss of the hardcoat layer. Thanks to the pore-free hardcoat coating, the laminate can be used in rooms with the highest hygienic requirements.



VETRO D2
bianco



VETRO D2
moro



VETRO D2
cubanit

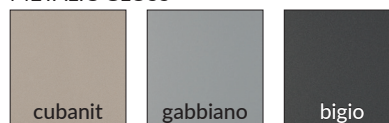


VETRO D2
gabbiano

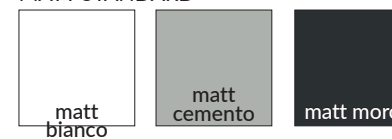
STANDARD GLOSS



METALIC GLOSS



MATT STANDARD



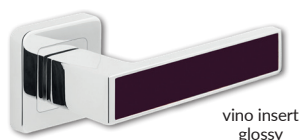
XTREME MATT



*while stock lasts

Door handles

Sliding system SPAZIO CD mounted on-wall



door handle MEDA - shiny chrome
inserts in glossy and matt colors



backplate for
simple key



cylinder lock
backplate



backplate for
toilet lock

round handle



gold



gold satrin



chrome



Satin chrome



black



PRISMA handle - shiny chrome



backplate for
simple key



cylinder lock
backplate



bathroom lock
backplate

oval handle



gold



gold satrin



black



MAXIMA handle - brushed chrome



backplate for
simple key



cylinder lock
backplate



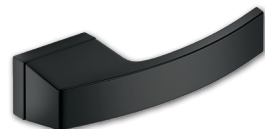
bathroom lock
backplate



chrome



Satin chrome



ARC handle - black matt



backplate for
simple key



cylinder lock
backplate



backplate for
toilet lock

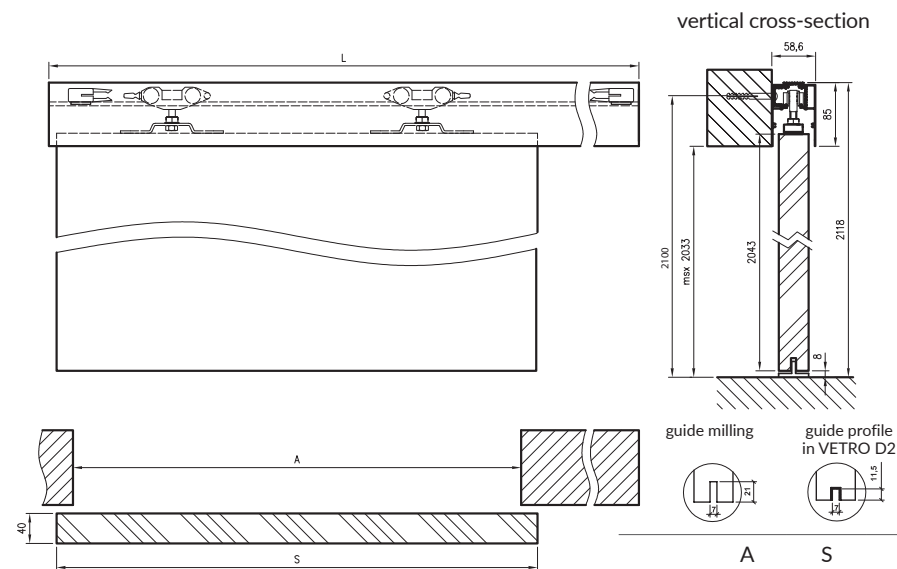
SPAZIO CD

On-wall mounted sliding system with anodized guide channel and rectangular blende. Is designated for panel doors and frame construction doors.

WHOLE SET COMPRISES OF:

- guide channel with side caps
- system sliding trolleys
- door leaf hangers
- bottom stopper
- assembly kit (screws and bolts)

To complete the system, it is necessary to purchase sliding door leaf with a handle. Handles should be purchased separately.



	A	S	L
"60"	600	644	1370
"70"	700	744	1570
"80"	800	844	1770
"90"	900	944	1970
"100"	1000	1044	2170

Door leaf width: single leaf door "60" - "100".

A - width of wall passage
S - width of door leaf unit
L - length of guide channel

CONSTRUCTION

Adjustable door frame is made of high quality wood-based MDF board. On its visual side it is entirely coated with high gloss laminate or Xtreme Matt wit 0,7 - 0,8 mm thickness. Its construction allows to be used with door leaf with thickness of 40 mm and its design allows to be used on walls ranging between 75-320 mm, also there is possibility for additional adjustment of + 20 mm.

Acrylic laminate 0.7-0.8 mm of thickness is a high-gloss or matte laminate consisting of an acrylic layer and a layer of co-extruded styrene copolymer.

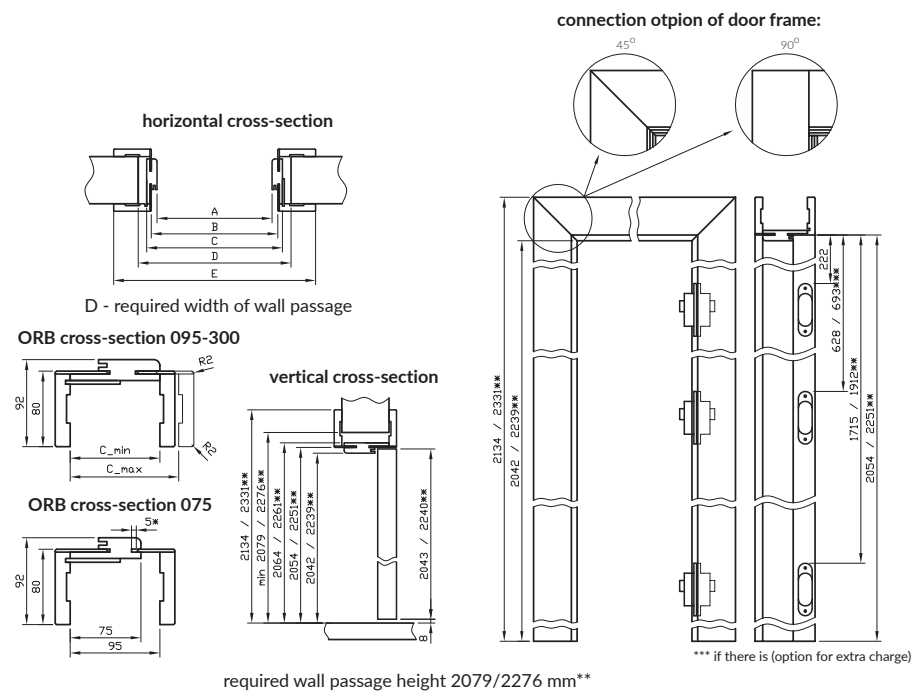
Xtreme Matt Laminate 0.8 mm of thickness is a laminate based on melamine resins with an upper functional layer hardened with an electron stream. It has the Anti-Finger-Print property, which provides increased resistance to fingerprints and traces of grease.

Application

Adjustable non-rebated door frame coated with high gloss laminate or Xtreme Matt can be used with DRE collections: ILIS, NELLA, SILIA and VETRO D2 non-rebated door leaf.

SET CONTAINS

Main beam (one horizontal and two vertical elements) with wide angular architrave (80 mm) with small rounding angles of the cross-section profile (R2), door seal, a set of hinges, all necessary components for the installation of door frames in accordance with the supplied instruction. Door frames are packed in cardboard boxes.



for single-leaf doors

	A	B	C	D	E
60	627	651	671	700	811
70	727	751	771	800	911
80	827	851	871	900	1011
90	927	951	971	1000	1111
100	1027	1051	1071	1100	1211

for double-leaf doors

	A	B	C	D	E
120	1274	1298	1318	1350	1458
130	1374	1398	1418	1450	1558
140	1474	1498	1518	1550	1658
150	1574	1598	1618	1650	1758
160	1674	1698	1718	1750	1858
170	1774	1798	1818	1850	1958
180	1874	1898	1918	1950	2058

*NOTE: 075-095 door frame has a different cross-section, for a 75-89 mm wall thickness, it will be necessary to shorten the profile of the moving angular architrave.

** for the leaf size 2240 mm

The offer is valid from the 02/01/2023



DRE Sp. z o.o.
82-300 Elbląg - Gronowo Górne
ul. Nefrytowa 4

tel. 55 236 42 58
e-mail: dre@dre.pl, eksport@dre.pl

www.dre.pl

